

\$929,000 - 50 Redwing Wynd, St. Albert

MLS® #E4431034

\$929,000

3 Bedroom, 2.50 Bathroom, 2,799 sqft

Single Family on 0.00 Acres

Riverside (St. Albert), St. Albert, AB

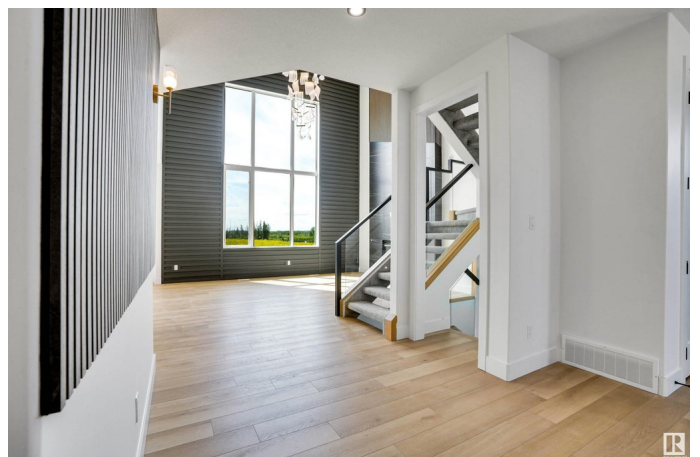
Fully Custom Built Triple Garage.....North Facing Corner Lot with Sunlight throughout the day. Tons of Upgrades and premium finishes. You will be impressed. BLACK Frame Triple Pane Windows. Exposed Concrete Driveway. 9 feet ceiling on all 3 Levels with 8 feet interior doors. Open Stinger stairs with Maple Hand rails with Glass. Step lights on the stairs. Open to above high ceiling in Great room with 4 feet by 2 feet porcelain tiles and wood panel all the way to the ceiling. 12 feet high window in the Living room with wood paneling. Shaker style Painted Custom cabinets including butlers Pantry. Huge Island with waterfall counter tops. Custom feature walls in the Foyer, Master & great room. Rough in for Sound system, Security and Central Vaccum system. Huge unspiled basement has a side entrance with lots of extra parking on the corner lot. Master Ensuite with 2 ft x 4 ft tiles in the custom shower. Huge Laundry room connected to the Master Bedroom closet. Ungraded finishing with glass railings and trims.

Built in 2025

Essential Information

MLS® # E4431034

Price \$929,000



Bedrooms	3
Bathrooms	2.50
Full Baths	2
Half Baths	1
Square Footage	2,799
Acres	0.00
Year Built	2025
Type	Single Family
Sub-Type	Detached Single Family
Style	2 Storey
Status	Active

Community Information

Address	50 Redwing Wynd
Area	St. Albert
Subdivision	Riverside (St. Albert)
City	St. Albert
County	ALBERTA
Province	AB
Postal Code	T8N 8B7

Amenities

Amenities	Ceiling 9 ft.
Parking Spaces	6
Parking	Triple Garage Detached

Interior

Interior Features	ensuite bathroom
Appliances	Garage Opener, Hood Fan
Heating	Forced Air-1, Natural Gas
Fireplace	Yes
Fireplaces	Mantel
Stories	2
Has Basement	Yes
Basement	Full, Unfinished

Exterior

Exterior	Wood, Stone, Vinyl
Exterior Features	Corner Lot, Flat Site, Golf Nearby, Park/Reserve, Playground Nearby

Roof	Asphalt Shingles
Construction	Wood, Stone, Vinyl
Foundation	Concrete Perimeter

Additional Information

Date Listed	April 15th, 2025
Days on Market	95
Zoning	Zone 24

DATA IS DEEMED RELIABLE BUT IS NOT GUARANTEED ACCURATE BY THE REALTORS® ASSOCIATION OF EDMONTON. COPYRIGHT 2025 BY THE REALTORS® ASSOCIATION OF EDMONTON. ALL RIGHTS RESERVED.Trademarks are owned or controlled by the Canadian Real Estate Association (CREA) and identify real estate professionals who are members of CREA (REALTOR®, REALTORS®) and/or the quality of services they provide (MLS®, Multiple Listing Service®)

Listing information last updated on July 19th, 2025 at 8:17am MDT